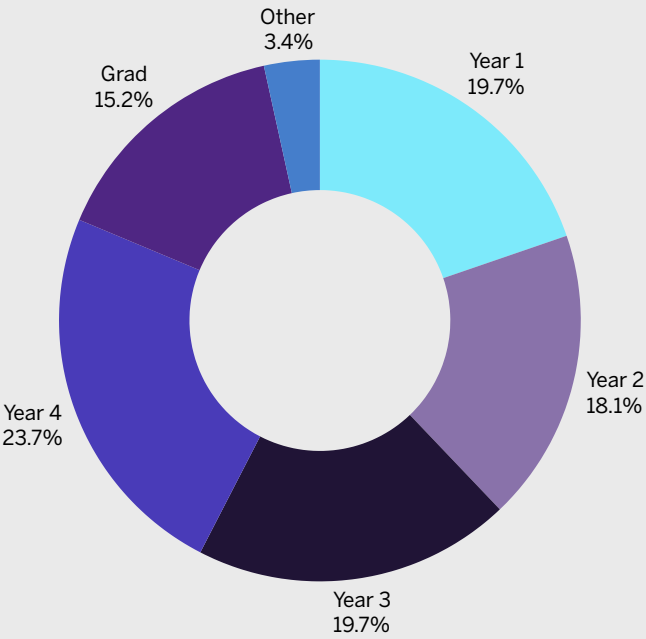


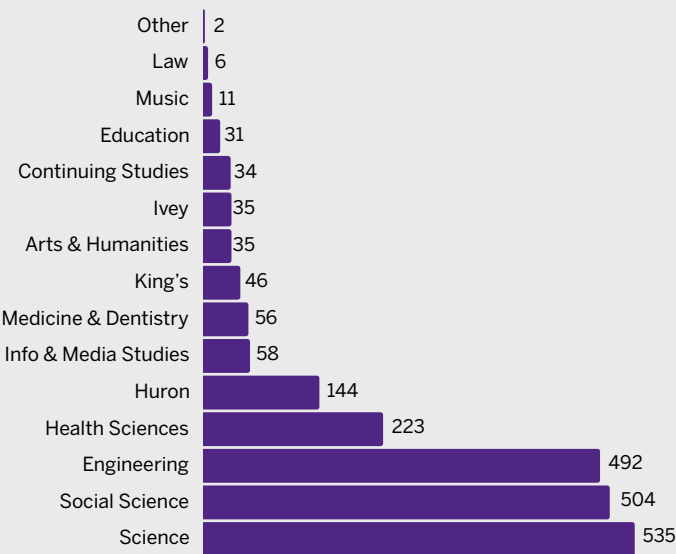
# hirewesternu Career Fair

February 11 & 12, 2025

## Participation by year



## Participation by Faculty



2,560

total student attendees  
across both event days



I felt that the students were very engaged and had great questions in regards to opportunities at [my organization]. Also, well organized and lunch was great as well as breakfast.

- Employer respondent

## Students are seeking opportunities that are...



Student respondents were primarily (57%) looking for work integrated learning opportunities (i.e. internship, co-op).

77%

of student respondents  
prefer a two-day  
Career Fair.  
(26% went both days!)

79%

of employer  
respondents are  
interested in attending  
the Career Fair again.

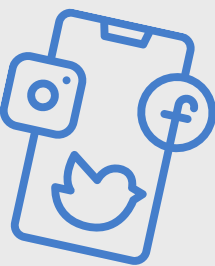
89%

of employer  
respondents agreed that  
registration was easy.

## Students heard about the event via...



Email (72%)



Social media (24%)



Careers &  
Experience  
newsletter (25%)



I got 4 different interviews from networking! Employers were kind and open to help you connect with the right job.

- Student respondent

43%

of employer respondents  
were inspired to be on  
the hirewesternuAbility  
Spotlight list for the next  
Career Fair.